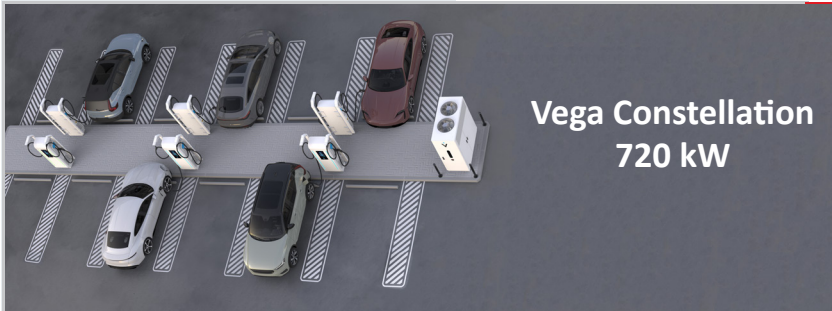




Electrical & Instrumentation Business Unit

Issue 34 Newsletter December 2024



Vega Constellation
720 kW

Inside this issue
Introducing ultra-fast EV charging system--
Vega HPC Constellation
CAT 1 Thermography Course
testo 883



SPOTLIGHT ON: Introducing Vega HPC Constellation -- Ultra fast EV Charging system



The HPC (High Power Charging) Constellation 720 kW revolutionizes EV charging, providing a powerful solution for cars, buses, and trucks. With a total power output of 720 kW from a single unit, it can deliver up to 480 kW per connector.

With advanced HPC connectors and a cable management system, the HPC Constellation ensures an effortless and efficient recharging experience for EV users.

Additionally, the HPC Constellation can incorporate energy storage batteries or photovoltaic panels equipped with an inverter. The centralized power in the main cabinet is efficiently distributed through six dual dispensers, each supporting up to 12 connectors, enabling dynamic and automatic power balancing.

Vega HPC Constellation 720 kW

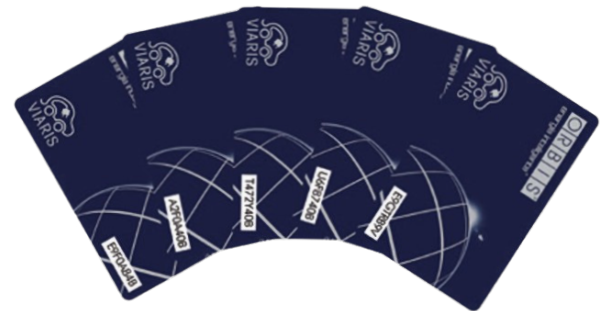


Why to invest in the HPC Constellation 720 kW?

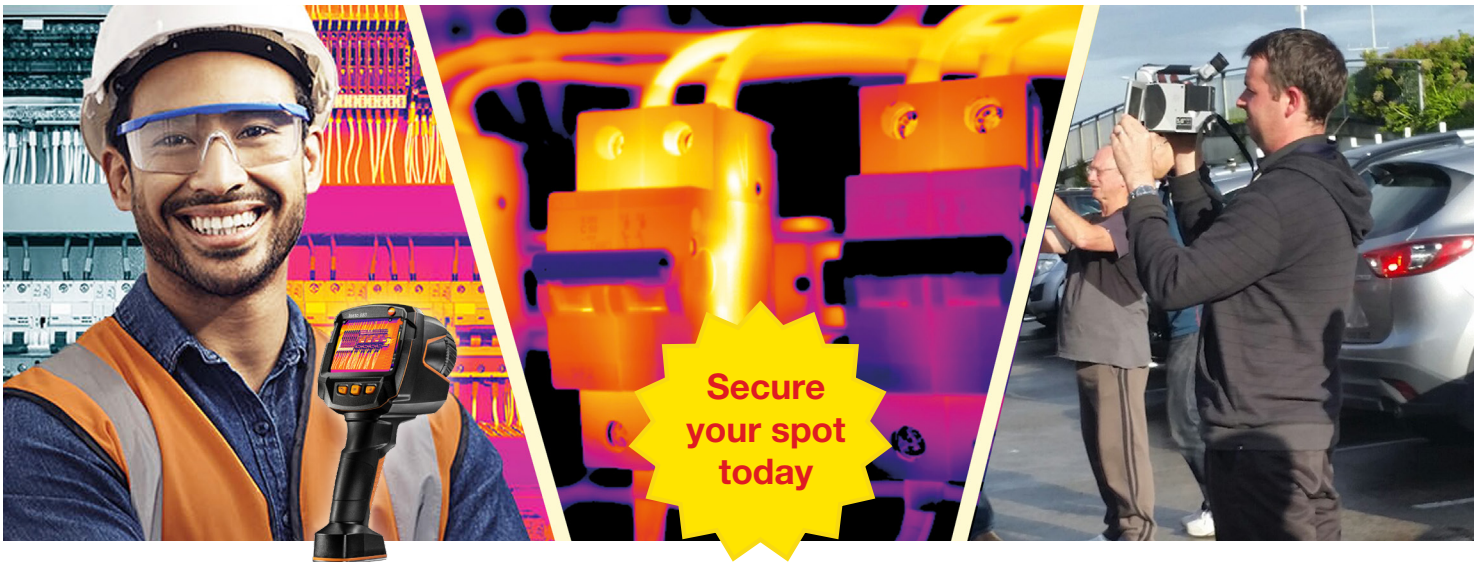
- *Dynamic distribution of the total power of 720 kW*
- *Modular charging stations up to 480 kW*
- *Scalable projects that reduce your CAPEX and OPEX*
- *Maximise the energy available for your customers*
- *Improve the ROI of the installation, delivering more energy to more cars*
- *Simultaneous charging up to 12 vehicles*

Payment method

VEGA chargers support multiple access and payment methods, including RFID and mobile apps.



**For more info contact your local Eurotec Sales Engineer or give us a call: 09 579 1990
or email sales@eurotec.co.nz**



Secure your spot today

Category 1 Thermography Certification Course

Why the course is important?

Master all camera features to tackle thermography challenges.

Who is the course for?

Electricians, Insurance reporters, Building Inspectors, Industrial Maintenance Inspectors, Inspectors of solar energy/photovoltaic systems.

What do I need to bring?

A laptop and headphones for use during the course.

What to expect?

Our trainer will conduct the course via Microsoft teams, with Eurotec qualified thermographers managing the class and assisting with practical lessons.

Do I need to have a specific brand of camera?

No matter what brand of camera you have, this course will teach you how to use your thermal imaging camera to its full potential and give you the tools to become a Category 1 Qualified Thermographer. If you don't have a camera yet, we can provide cameras for the duration of the course.

Date: 24th - 28th February 2025, 9am - 5pm

Cost: \$2,980+GST per person

Location: Eurotec Auckland Office, 750C Great South Road, Penrose

Eurotec Christchurch: 30A Carlyle Street, Sydenham

(Morning Tea, Lunch & Afternoon Tea provided)



testo 883 Thermal Imager for Electrical and Insurance reporting application

A 'must-have' tool kit for electricians, maintenance staff, facility managers & building energy consultants who wish to rely on the best thermal image quality and features for their thermal measuring tasks.

Buy any 883 camera & get a 770-3 clamp set free. This offer is only available at J.A. Russell



Contact Eurotec:

AK: 09-579-1990

CH: 03-366-0017

WLG: 04-499-3591

Email us: sales@eurotec.co.nz

Click to view our online catalogue.



Visit our website:
www.eurotec.co.nz

Follow Eurotec:

