

# What do you want to control wirelessly?

## [A] Lights



**on/off**

**Go to page 2**

**dimming**

**Go to page 3**

## [B] Door chime



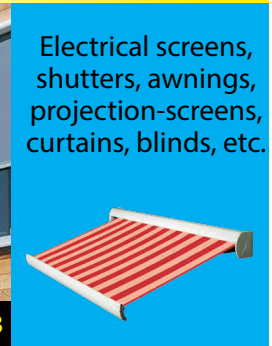
**Go to page 105**



## [C] Shades/screens



**Go to page 108**



## [D] Devices



**Go to page 111**

Elektrical heater, ventilation, television, hifi, modem/router, etc.



## [E] Alert system



**Go to page 116**



## [F] IP CAMERA



**Go to page 117**



# What kind of light is it?



**Incandescent**



Go to page 4

**Eco halogen**



Go to page 5

**230V halogen**



Go to page 6

**12V halogen with electronic transformer**



Go to page 7

**12V halogen with coil transformer**



Go to page 8

**ESL**



Go to page 9

**LED**



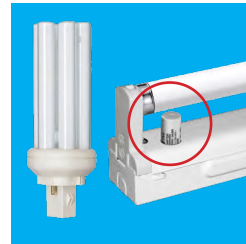
Go to page 10

**Fluorescent lighting without external starter**



Go to page 11

**Fluorescent lighting with external starter**



Go to page 12

# What kind of light is it?



**Incandescent**



Go to page **13**

**Eco halogen**



Go to page **14**

**230V halogen**



Go to page **15**

**12V halogen with electronic transformer**



Go to page **16**

**12V halogen with coil transformer**



Go to page **17**

**Dimmable ESL**



Go to page **18**

**Dimmable LED**



Go to page **19**

# How is the incandescent lamp powered?



Via a wall socket



Go to page 20

Via a fitting (E27)



Go to page 21

Behind a single wall switch



Go to page 22

Via a wall or ceiling box



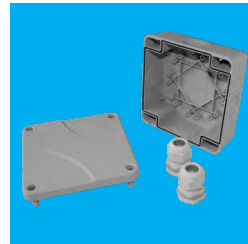
Go to page 23

In a closet or suspended ceiling



Go to page 24

Via a waterproof junction box



Go to page 25

# How is the eco-halogen lamp powered?



Via a wall socket



Go to page **26**

Via a fitting (E27)



Go to page **27**

Behind a single wall switch



Go to page **28**

Via a wall or ceiling box



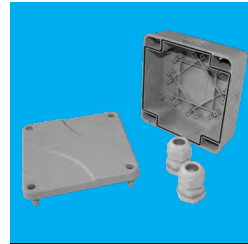
Go to page **29**

In a closet or suspended ceiling



Go to page **30**

Via a waterproof junction box



Go to page **31**

# How is the 230V halogen lamp powered?



Via a wall socket



Go to page 32

Behind a single wall switch



Go to page 33

Via a wall or ceiling box



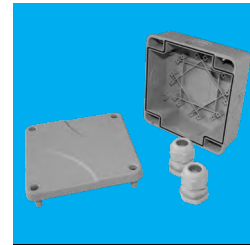
Go to page 34

In a closet or suspended ceiling



Go to page 35

Via a waterproof junction box



Go to page 36

# How is the 12V halogen lamp powered?

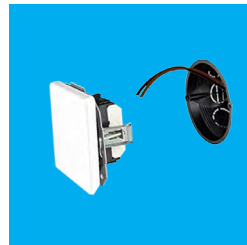


Via a wall socket



Go to page **37**

Behind a single wall switch



Go to page **38**

Via a wall or ceiling box



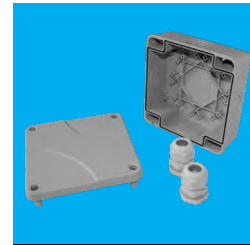
Go to page **39**

In a closet or suspended ceiling



Go to page **40**

Via a waterproof junction box

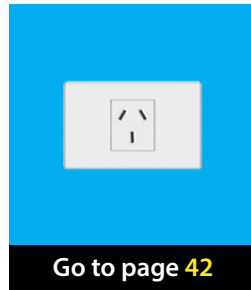


Go to page **41**

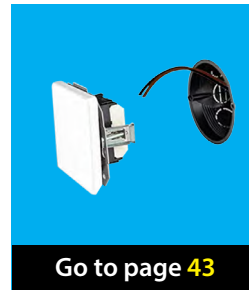
# How is the 12V halogen lamp powered?



Via a wall socket



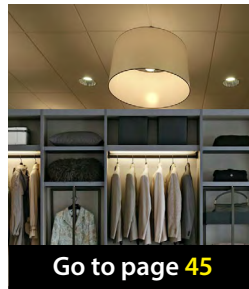
Behind a single wall switch



Via a wall or ceiling box



In a closet or suspended ceiling



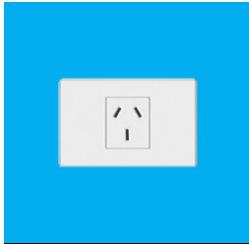
Via a waterproof junction box



# How is the ESL powered?



Via a wall socket



Go to page **47**

Via a fitting (E27)



Go to page **48**

Behind a single wall switch



Go to page **49**

Via a wall or ceiling box



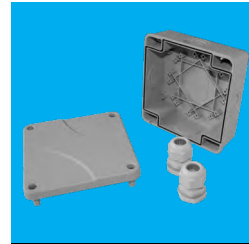
Go to page **50**

In a closet or suspended ceiling



Go to page **51**

Via a waterproof junction box



Go to page **52**

# How is the LED lamp powered?



Via a wall socket



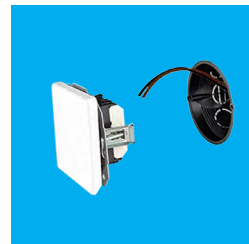
Go to page **53**

Via a fitting (E27)



Go to page **54**

Behind a single wall switch



Go to page **55**

Via a wall or ceiling box



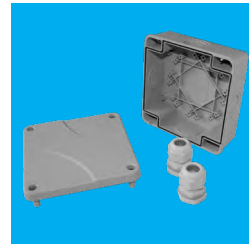
Go to page **56**

In a closet or suspended ceiling



Go to page **57**

Via a waterproof junction box



Go to page **58**

# How is the fluorescent lamp powered?



Via a wall socket



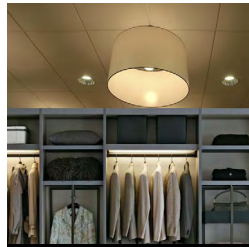
Go to page 59

Via a wall or ceiling box



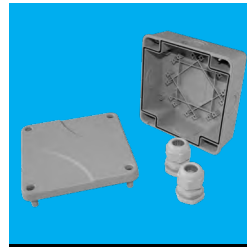
Go to page 60

In a closet or suspended ceiling



Go to page 61

Via a waterproof junction box



Go to page 62



# How is the fluorescent lamp powered?

Via a wall socket



Go to page **63**

Via a wall or ceiling box



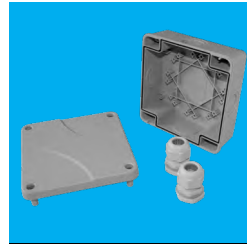
Go to page **64**

In a closet or suspended ceiling



Go to page **65**

Via a waterproof junction box



Go to page **66**

# How is the incandescent lamp powered?



Via a wall socket



Go to page **67**

Via a fitting (E27)



Go to page **68**

Behind a single wall switch



Go to page **69**

Via a wall or ceiling box



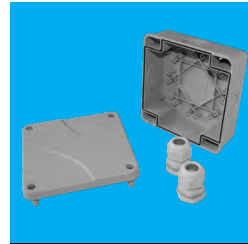
Go to page **70**

In a closet or suspended ceiling



Go to page **71**

Via a waterproof junction box



Go to page **72**

# How is the eco-halogen lamp powered?



Via a wall socket



Go to page **73**

Via a fitting (E27)



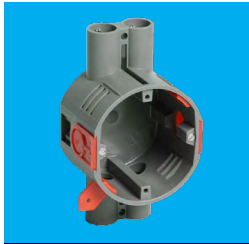
Go to page **74**

Behind a single wall switch



Go to page **75**

Via a wall or ceiling box



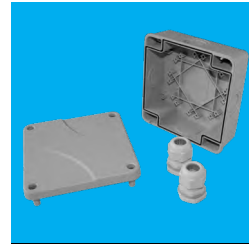
Go to page **76**

In a closet or suspended ceiling



Go to page **77**

Via a waterproof junction box



Go to page **78**

# How is the 230V halogen lamp powered?



Via a wall socket



Go to page **79**

Behind a single wall switch



Go to page **80**

Via a wall or ceiling box



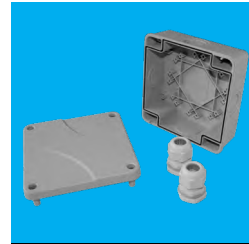
Go to page **81**

In a closet or suspended ceiling



Go to page **82**

Via a waterproof junction box



Go to page **83**

# How is the 12V halogen lamp powered?



Via a wall socket



Go to page **84**

Behind a single wall switch



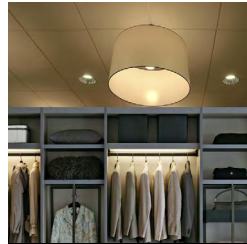
Go to page **85**

Via a wall or ceiling box



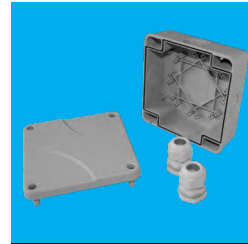
Go to page **86**

In a closet or suspended ceiling



Go to page **87**

Via a waterproof junction box



Go to page **88**

# How is the 12V halogen lamp powered?



Via a wall socket



Go to page **89**

Via a wall or ceiling box



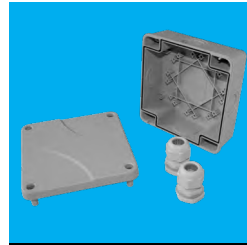
Go to page **90**

In a closet or suspended ceiling



Go to page **91**

Via a waterproof junction box

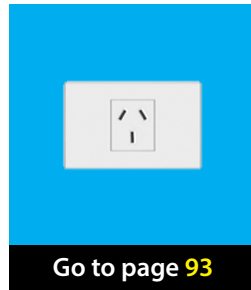


Go to page **92**

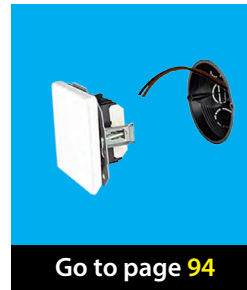
# How is the dimmable ESL powered?



Via a wall socket



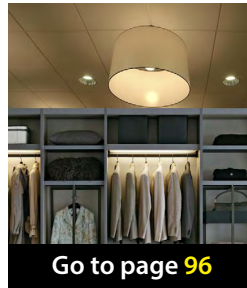
Behind a single wall switch



Via a wall or ceiling box



In a closet or suspended ceiling



Via a waterproof junction box



# How is the dimmable LED lamp powered?



Via a wall socket



Go to page **98**

Behind a single wall switch



Go to page **99**

Via a wall or ceiling box



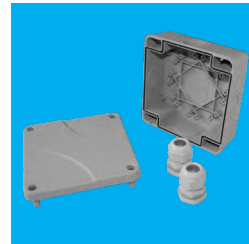
Go to page **100**

In a closet or suspended ceiling



Go to page **101**

Via a waterproof junction box



Go to page **102**

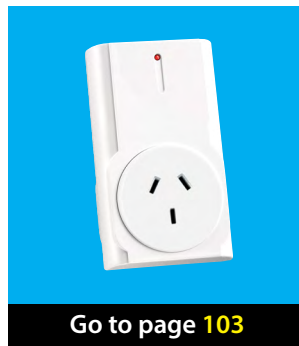
## Choose a receiver



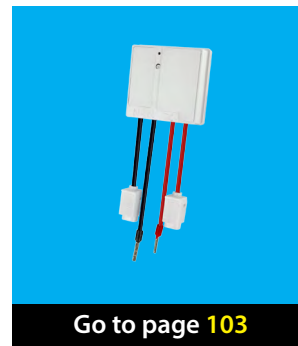
AC-2400



APA3-1500R



AWS-3500



## Choose a receiver



AFR-060



Go to page 103

## Choose a receiver



**AWMR-230**



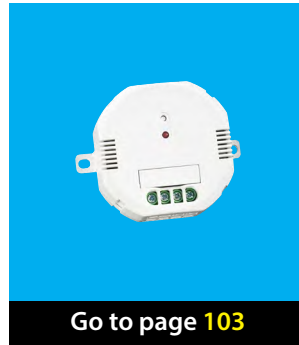
**AWMR-300**



## Choose a receiver



ACM-1000



Go to page 103

## Choose a receiver



ACM-1000



ACM-3500-3



## Choose a receiver



ACM-1000



ACM-3500-3



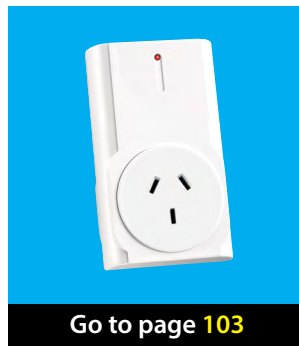
## Choose a receiver



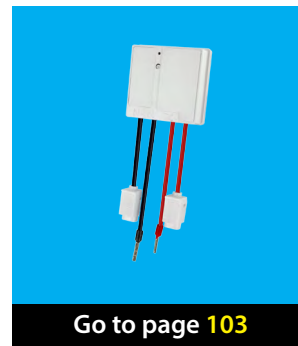
AC-2400



APA3-1500R



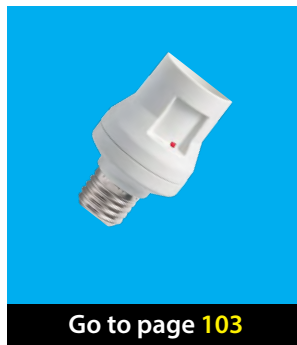
AWS-3500



## Choose a receiver



AFR-060



Go to page 103

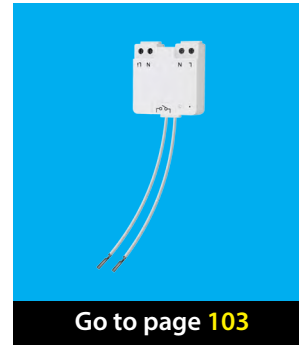
## Choose a receiver



**AWMR-230**



**AWMR-300**



## Choose a receiver



ACM-1000

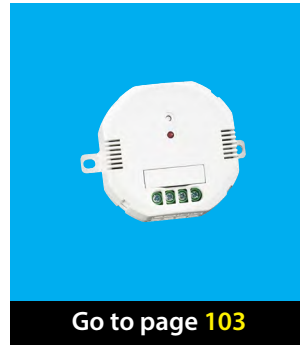


Go to page 103

## Choose a receiver



ACM-1000



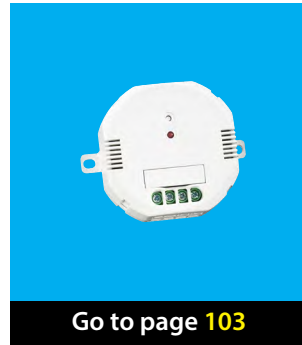
ACM-3500-3



## Choose a receiver



ACM-1000



ACM-3500-3



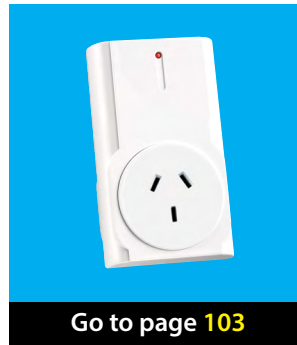
## Choose a receiver



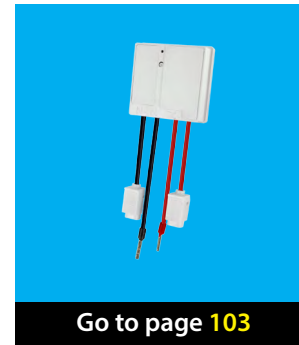
AC-2400



APA3-1500R



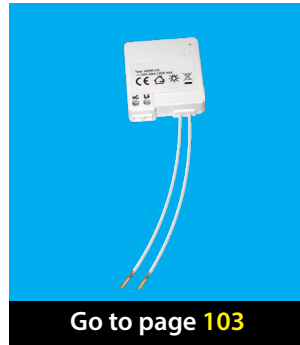
AWS-3500



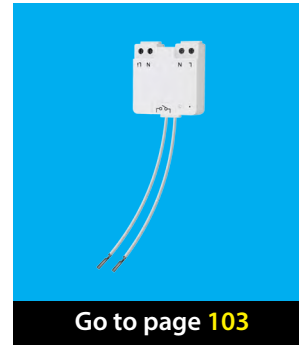
## Choose a receiver



**AWMR-230**



**AWMR-300**



## Choose a receiver



ACM-1000



Go to page **103**

## Choose a receiver



ACM-1000



ACM-3500-3



## Choose a receiver



ACM-1000



ACM-3500-3



## Choose a receiver



AC-2400



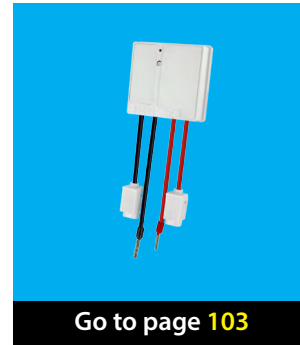
Go to page **103**

APA3-1500R



Go to page **103**

AWS-3500



Go to page **103**

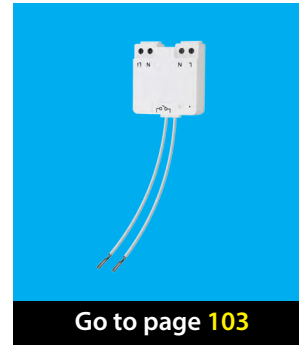
## Choose a receiver



**AWMR-230**



**AWMR-300**



## Choose a receiver



ACM-1000

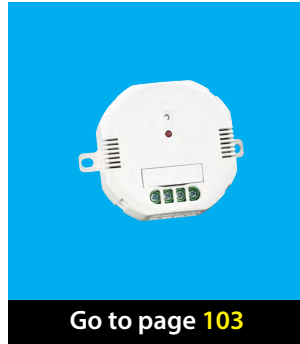


Go to page **103**

## Choose a receiver



ACM-1000



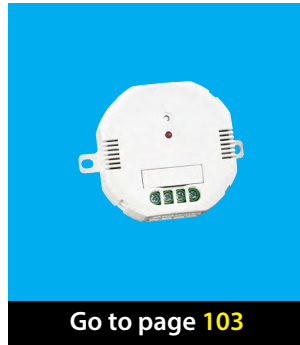
ACM-3500-3



## Choose a receiver



ACM-1000



ACM-3500-3



## Choose a receiver



AC-2400



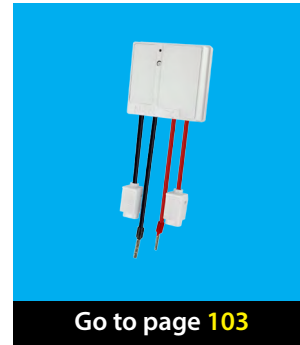
Go to page **103**

APA3-1500R



Go to page **103**

AWS-3500



Go to page **103**

## Choose a receiver



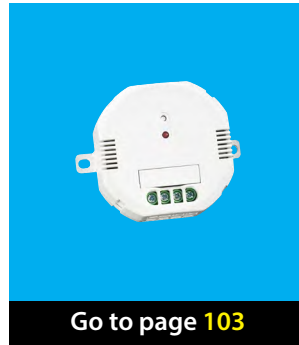
**AWMR-300**



## Choose a receiver



ACM-1000

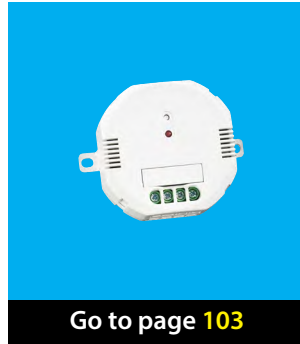


Go to page **103**

## Choose a receiver



ACM-1000



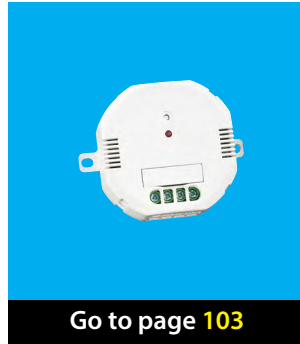
ACM-3500-3



## Choose a receiver



ACM-1000



ACM-3500-3



## Choose a receiver



AC-2400



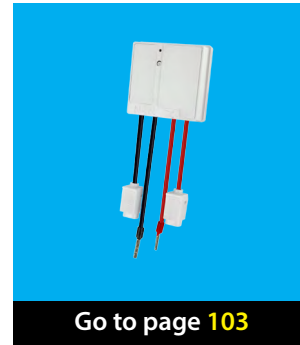
Go to page **103**

APA3-1500R



Go to page **103**

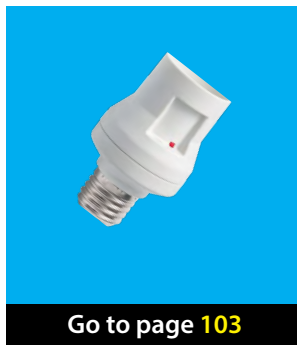
AWS-3500



Go to page **103**



AFR-060



Go to page **103**

## Choose a receiver



**AWMR-300**



## Choose a receiver



ACM-1000

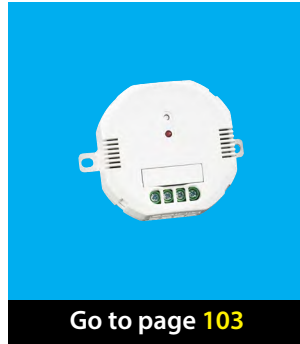


Go to page 103

## Choose a receiver



ACM-1000



ACM-3500-3



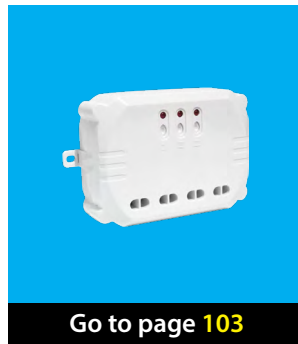
## Choose a receiver



ACM-1000



ACM-3500-3



## Choose a receiver



AC-2400



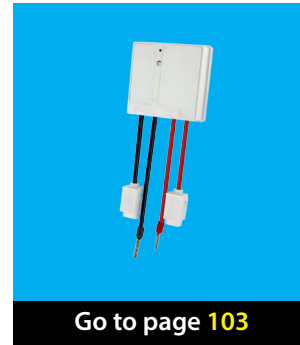
Go to page **103**

APA3-1500R



Go to page **103**

AWS-3500



Go to page **103**



AFR-060



Go to page 103

## Choose a receiver



**AWMR-300**

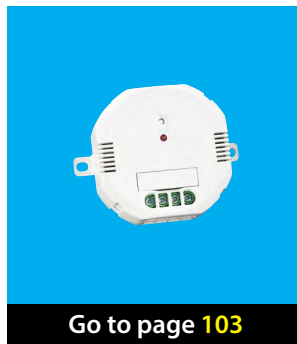


Go to page **103**

## Choose a receiver



ACM-1000

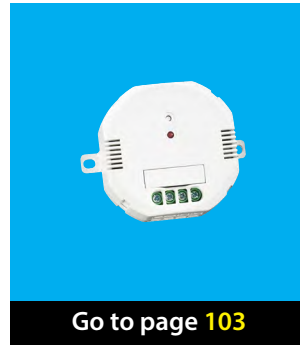


Go to page 103

## Choose a receiver



ACM-1000



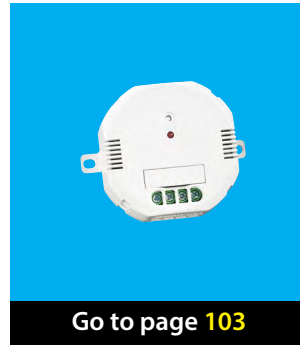
ACM-3500-3



## Choose a receiver



ACM-1000



ACM-3500-3



## Choose a receiver



AC-2400



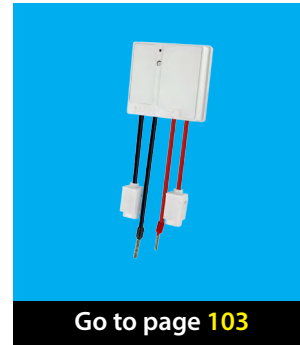
Go to page **103**

APA3-1500R



Go to page **103**

AWS-3500



Go to page **103**

## Choose a receiver



ACM-1000

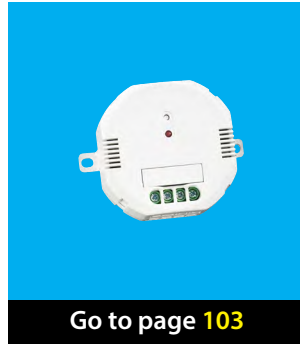


Go to page 103

## Choose a receiver



ACM-1000



ACM-3500-3



## Choose a receiver



ACM-1000



ACM-3500-3



## Choose a receiver



AC-2400



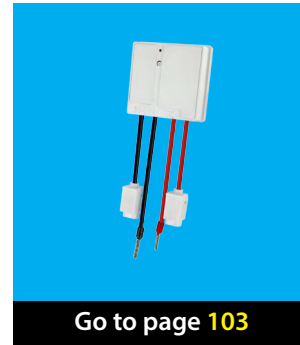
Go to page **103**

APA3-1500R



Go to page **103**

AWS-3500



Go to page **103**

## Choose a receiver



ACM-1000

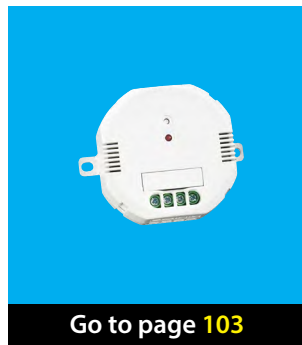


Go to page 103

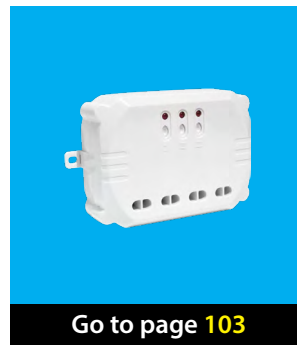
## Choose a receiver



ACM-1000



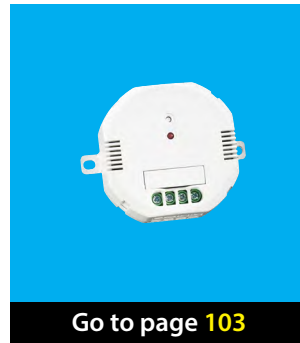
ACM-3500-3



## Choose a receiver



ACM-1000



ACM-3500-3



## Choose a receiver



AC-200



Go to page **103**

## Choose a receiver



AFR-100



Go to page **103**

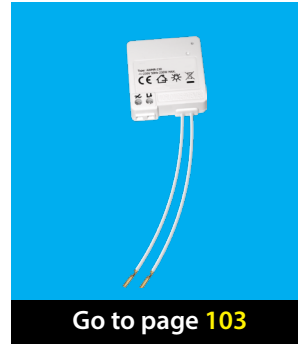
## Choose a receiver



**AWMR-210**



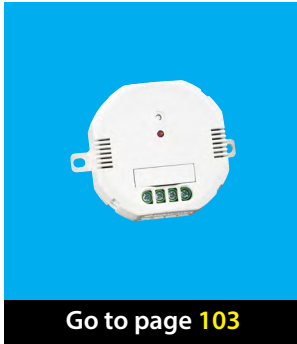
**AWMD-250**



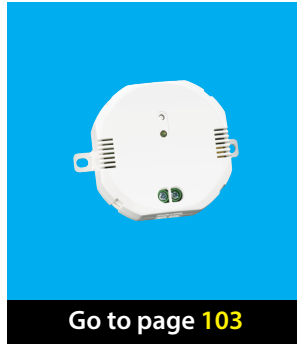
## Choose a receiver



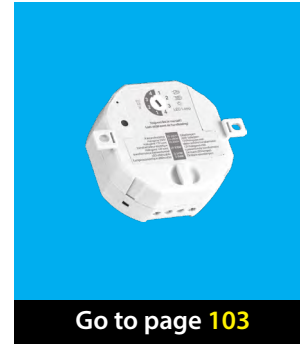
ACM-300



ACM-250



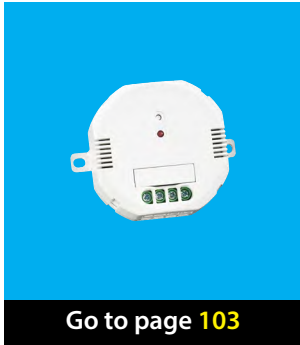
ACM-100



# Choose a receiver



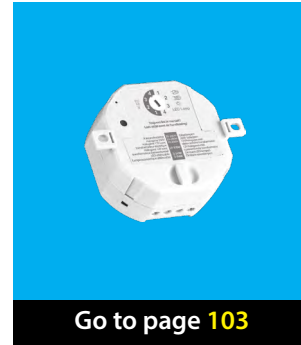
ACM-300



ACM-250



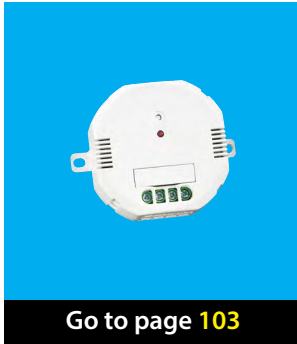
ACM-100



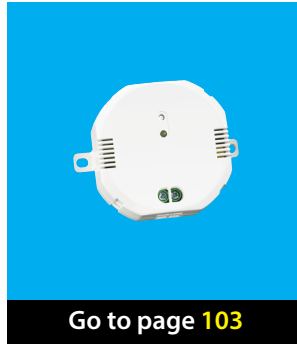
## Choose a receiver



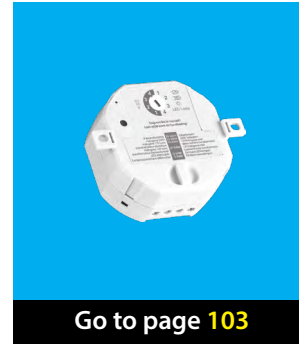
ACM-300



ACM-250



ACM-100



## Choose a receiver



AC-200



Go to page **103**

## Choose a receiver



AFR-100



Go to page **103**

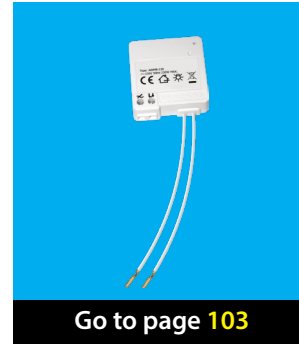
## Choose a receiver



**AWMR-210**



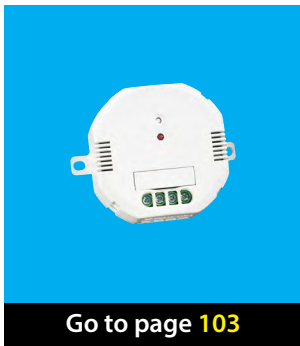
**AWMD-250**



## Choose a receiver



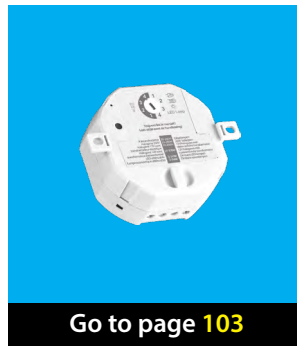
ACM-300



ACM-250



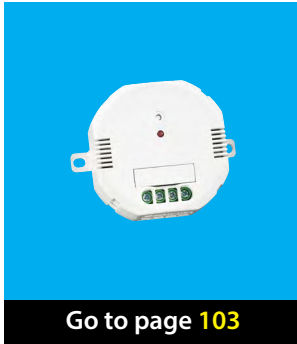
ACM-100



## Choose a receiver

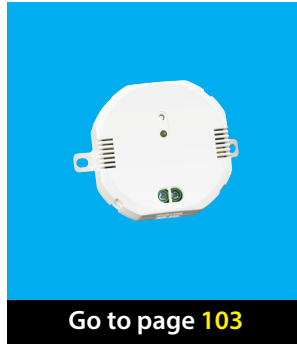


ACM-300



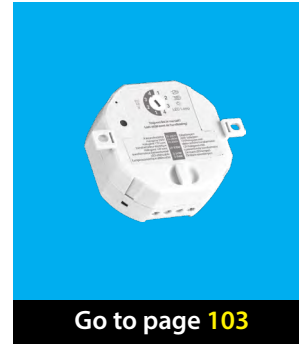
Go to page **103**

ACM-250



Go to page **103**

ACM-100

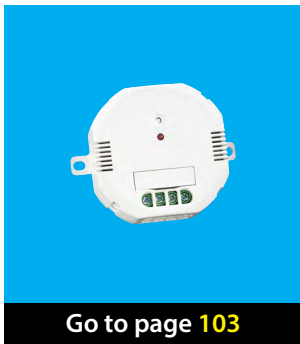


Go to page **103**

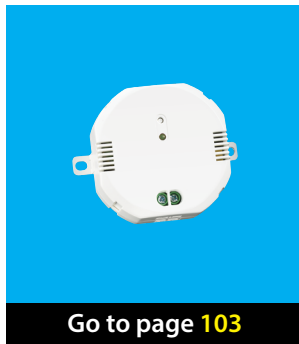
## Choose a receiver



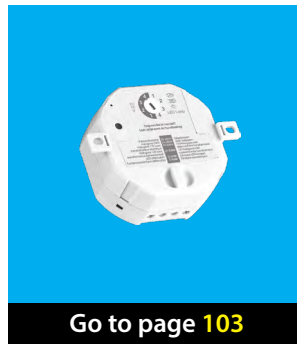
ACM-300



ACM-250



ACM-100



## Choose a receiver



AC-200



Go to page **103**

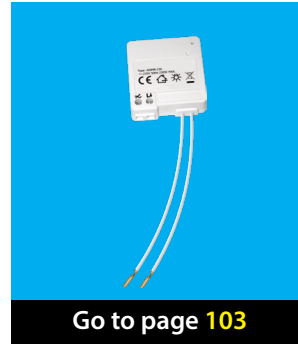
## Choose a receiver



**AWMR-210**



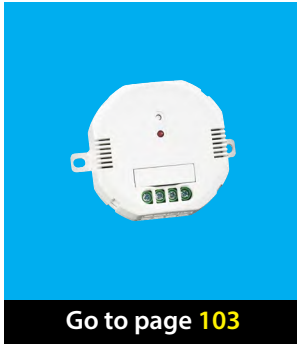
**AWMD-250**



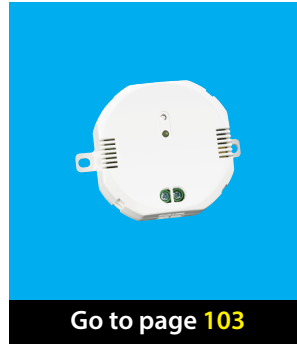
## Choose a receiver



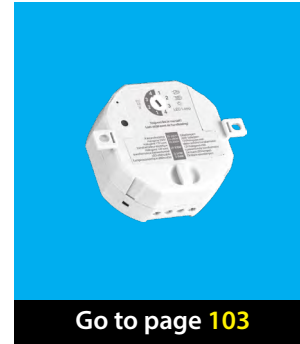
ACM-300



ACM-250



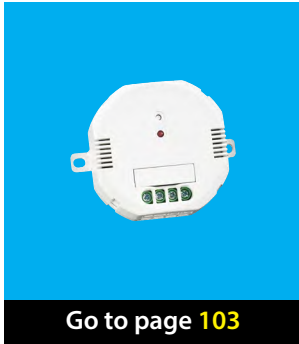
ACM-100



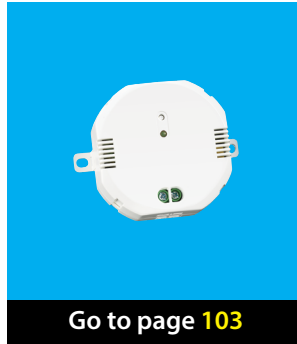
## Choose a receiver



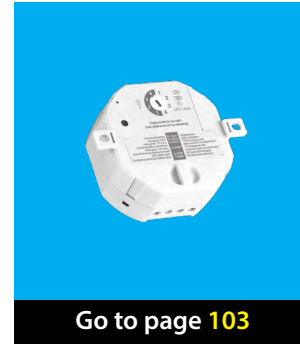
ACM-300



ACM-250



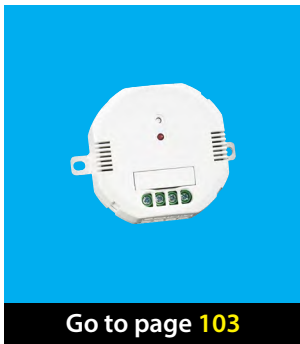
ACM-100



## Choose a receiver

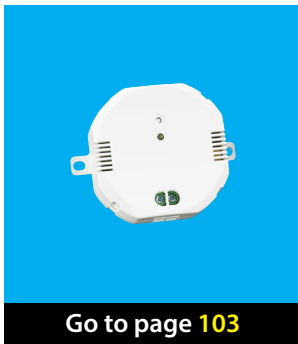


ACM-300



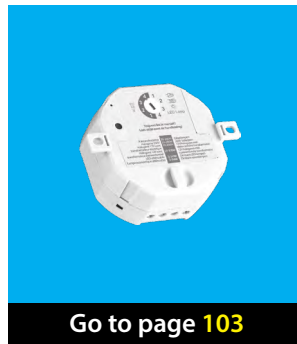
Go to page **103**

ACM-250



Go to page **103**

ACM-100



Go to page **103**

## Choose a receiver



AC-200



Go to page **103**

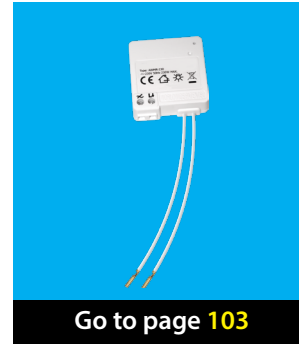
## Choose a receiver



**AWMR-210**



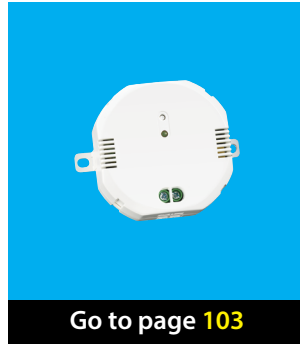
**AWMD-250**



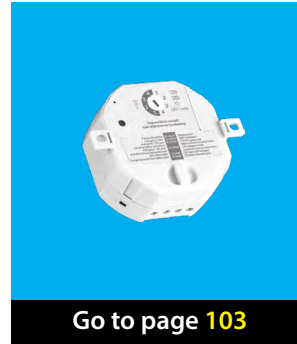
## Choose a receiver



ACM-250



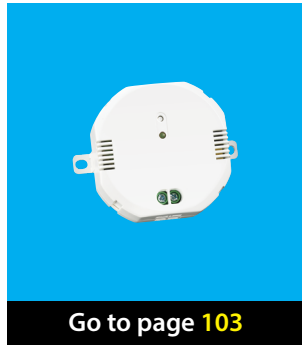
ACM-100



## Choose a receiver



ACM-250



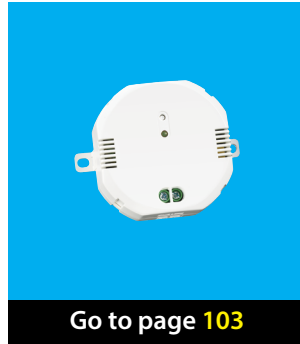
ACM-100



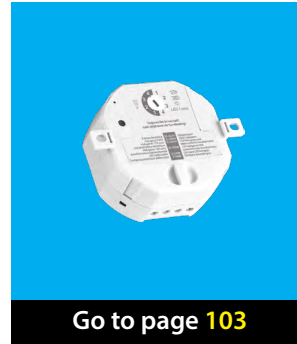
## Choose a receiver



ACM-250



ACM-100



## Choose a receiver



AC-200

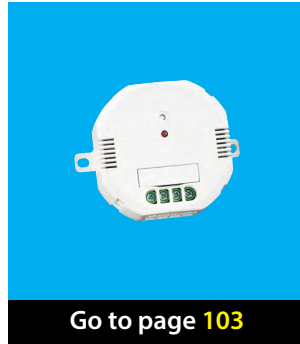


Go to page 103

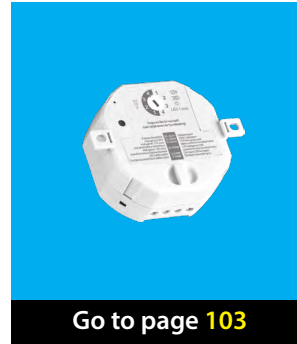
## Choose a receiver



ACM-300



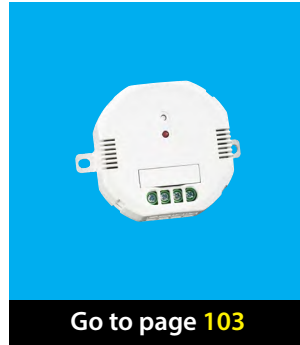
ACM-100



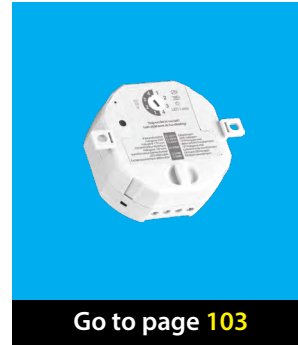
## Choose a receiver



ACM-300



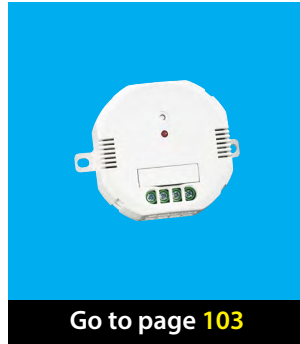
ACM-100



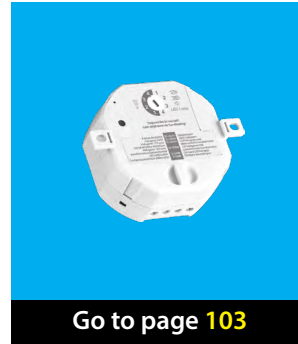
## Choose a receiver



ACM-300



ACM-100



## Choose a receiver



AC-200

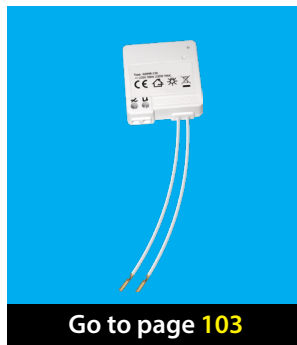


Go to page **103**

## Choose a receiver



AWMD-250



Go to page **103**

## Choose a receiver



ACM-100



Go to page **103**

## Choose a receiver



ACM-100



## Choose a receiver



ACM-100



Go to page **103**

## Choose a receiver



AC-200

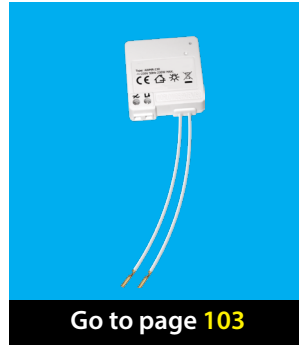


Go to page **103**

## Choose a receiver



AWMD-250



Go to page 103

## Choose a receiver



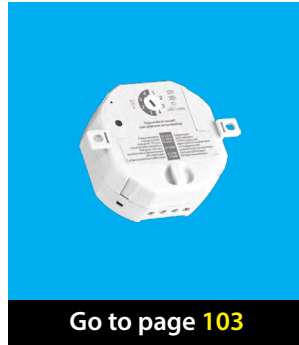
ACM-100



## Choose a receiver



ACM-100



Go to page **103**

## Choose a receiver



ACM-100





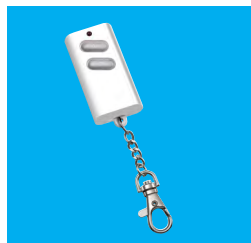
AYCT-102



ATMT-502



AKCT-510



APA3-1500R



Remote control

AWST-8800



AWST-8802



AWMT-003





AWMT-230



Wall switch

Read more on  
page 104 >>

 Switches off automatically  
(if needed)

 Programmable  
timers



### ICS-1000



### ICS-2000



## Control Station

### AWST-6000



### APIR-2150




### AMST-606




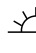
### ABST-604



## Sensor

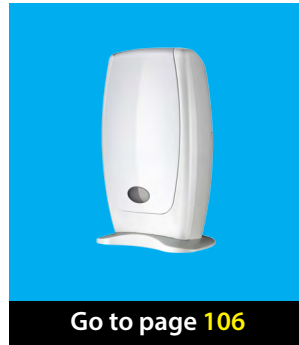
 Switches off automatically (if needed)

 Programmable timers

 Switches automatically at dusk/dawn



ACDB-6600C



# How do you want to control the door chime wirelessly?



ACDB-6600A



Push button

AWST-6000



APIR-2150



AMST-606



Sensor

AWST-8800



AWST-8802



AWMT-003





AWMT-230




Wall switch

Read more on page 107 >>

 Switches off automatically (if needed)

 Programmable timers

 Switches automatically at dusk/dawn

# How do you want to control the door chime wirelessly?



AYCT-102



ATMT-502



AKCT-510



APA3-1500R



Remote control


ICS-1000




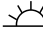
ICS-2000



Control Station

 Switches off automatically (if needed)

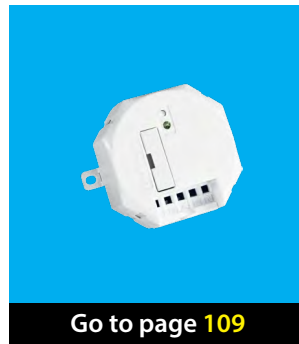
 Programmable timers

 Switches automatically at dusk/dawn

## Choose a receiver



ASUN-650



Go to page **109**



# How do you want to control the screens wirelessly?

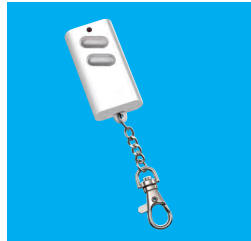
AYCT-102



ATMT-502



AKCT-510



APA3-1500R



Remote control

AWST-8800



AWST-8802



AWMT-003





AWMT-230



Wall switch

Read more on  
page 110 >>

 Switches off automatically  
(if needed)

 Programmable  
timers



# How do you want to control the screens wirelessly?

ICS-1000



Available on the  
App Store  
Available for  
Android

ICS-2000



Available on the  
App Store  
Available for  
Android

Control Station

AWST-6000



APIR-2150



AMST-606



ABST-604



Sensor

Switches off automatically (if needed)

Programmable timers

Switches automatically at dusk/dawn

# How is the device powered?



Via a wall socket



Go to page **112**

Via a wall or ceiling box



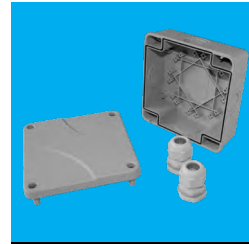
Go to page **113**

In a closet or suspended ceiling



Go to page **114**

Via a waterproof junction box



Go to page **115**

## Choose a receiver



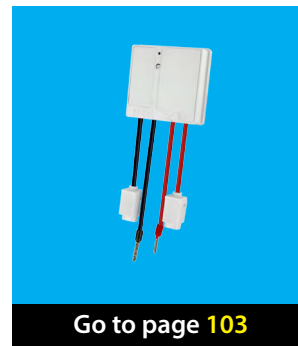
AC-2400



APA3-1500R



AWS-3500



## Choose a receiver



ACM-1000



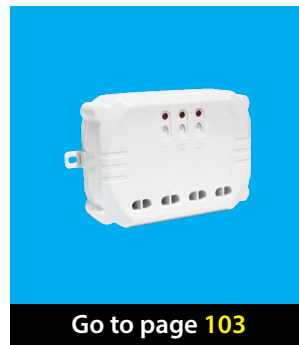
## Choose a receiver



ACM-1000



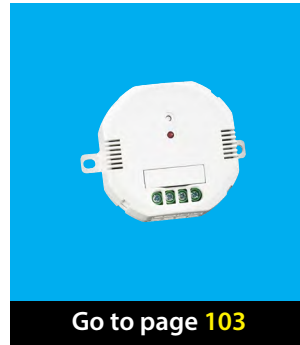
ACM-3500-3



## Choose a receiver



ACM-1000



ACM-3500-3





**ALSIR-2000**



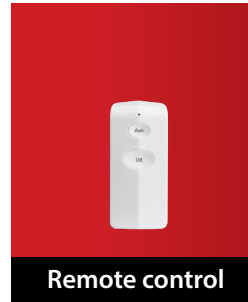
**ALMDT-2000**



**ALMST2000**



**ALKCT-2000**





IPCAM-2000

